



## V-ROYALE-L

Maturing cabinet

Premium pack

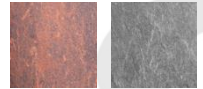
Sliding shelf



ACMSR

### GENERAL FEATURES

	<b>Full Glass door</b>
<b>Gross weight packaged (kg)*</b>	340
<b>Empty net weight (kg)</b>	250
<b>Dimensions H x W x D (mm)</b>	1847 x 880 x 617 (rear stop excluded)
<b>Dimensions packaged (mm)</b>	2000 x 970 x 700
<b>Colors / Finishes</b>	Red Earth, Mineral Grey



### TECHNICAL FEATURES

#### REGULATION

- Temperature and hygrometry : 12°C, 70%
- LED screen with sensitive keys
- Electronic internal display and settings
- Temperature display, non adjustable
- Hygrometry display, non adjustable
- Alarms in case of dysfunction (open door, sensor fault, temperature dysfunction, hygrometry dysfunction, need to fill the humidity tank, need to replace charcoal filter)
- Automatic defrost
- Frost protection thermostat (double protection)

#### HOT – COLD – INSULATION TECHNOLOGIES

- |                            |  |
|----------------------------|--|
| Cold production:           | <ul style="list-style-type: none"> <li>• Ventilated</li> <li>• Compressor R600a/R134a (Korea)</li> </ul> |
| Cords:                     | <ul style="list-style-type: none"> <li>• CE/UK/JA/AU/CH/CN/US/C6</li> </ul>                              |
| Heat production:           | <ul style="list-style-type: none"> <li>• Heating element</li> <li>• Automatic</li> </ul>                 |
| Heat release:              | <ul style="list-style-type: none"> <li>• 45W heating element</li> </ul>                                  |
| Inner material:            | <ul style="list-style-type: none"> <li>• Aluminum</li> </ul>   |
| Exterior coating material: | <ul style="list-style-type: none"> <li>• HPL panel (High pressure laminated)</li> </ul>                  |
| Insulation type:           | <ul style="list-style-type: none"> <li>• Injected polyurethane foam (59mm)</li> </ul>                    |

### EQUIPMENT & ACCESSORIES

#### EQUIPMENT

- On/Off/Standby key
- Triple glazed and anti-UV Full Glass door. Not reversible. Right or left opening > Choice when ordering
- Inner lighting: ambiance lighting by 4 LED under each shelf and 2 LED under the control panel (3 options: permanent, open door, disabled). 3 levels of light intensity adjustment
- Active charcoal filter 150x150 mm
- 4 adjustable shock-absorbing feet + 4 embellishments
- Autonomous hygrometry regulation tank - « Hydrocontrol System ». Patented system
- Handle integrated in the door profile
- Condensate discharge pipe

#### ACCESSORIES

- 12 sliding shelves with black tinted ash front
- Sliding shelves equipped with a soft close device
- Total capacity: 106 or 124 bottles\*\*
- Sliding shelf capacity: up to 9 bottles
- 8 mains du Sommelier at the bottom of the cabinet
- 6 removable bottles identifiers per sliding shelf and 1 erasable felt-tip marker
- 1 microfiber cloth
- 1 EuroCave key ring

### ENERGY EFFICIENCY & CONSUMPTION

Cords	230V-50Hz	115V-60Hz	Volume utile (litres)
Type of door	Full Glass	Full Glass	
Energy efficiency class	A	-	436
Annual energy consumption AEC*** (Kwh/year)	150	212	
Sound emission (dB(A))	37	37	

\* Equipped cellar weight \*\*106 bottles: 86 traditional Bordeaux bottles + 20 Magnums / 124 bottles: 122 traditional Bordeaux bottles + 2 Magnums

\*\*\* Calculation based on the result obtained over 24 hrs in standard conditions (25°C / 77°F)